



ADIVA DIVINE

DRAPE YOURSELF IN THE DIVINE





**ADIVA DIVINE**  
DRAPE YOURSELF IN THE DIVINE

Adorn yourself in glamour and drape yourself in the divine with this gorgeous range of costume jewellery. Adiva Divine brings a glistening statement of individuality to highlight absolutely any outfit with ease and flair.

Whether work or play, Adiva Divine costume jewellery offers the perfect accompaniment to glam up your dressing style and dazzle admirers with a sophisticated look that exudes effortless beauty and charm. Only the best quality is found in the Adiva Divine range, including genuine Swarovski crystals to ensure ultimate glamour and the utmost highest quality.

Each of Adiva Divine's collection and piece presents its own unique attitude to fashion that enhances the wearer's personality and personal style.

*\*All Adiva Divine costume jewellery pieces are crafted with your health and wellness in mind. You can rest assured that each piece is set in yellow gold or platinum-plated lead-free based metal.*

*\*Earrings, necklaces, brooches and bracelets in Adiva Divine sets may also be purchased individually.*

# DESIRE COLLECTION

Beauty is one of the most sought-after qualities since the beginning of time. The Desire Collection pushes the boundaries of lust and passion, rendering them into the unique sets of costume jewellery with different moods, emotions and styles. Find the types of artistic flairs that suit you most with Adiva Divine's Desire Collection.



## ADIYA SET

Making you feel like a princess, the exquisite design of Adiya Set's golden foliage represents a portrait of glamour and royalty that is grand and yet versatile.



## ADIYA SET

Dress for success by adding flair to the magnificence of the Adiya Set with Adiya Brooch's alluring citrine-coloured Swarovski centrepiece.







## AUDREY SET

A mesmerising shade of Montana sapphire set on twirls of platinum curves evokes the glamorous beauties that once graced the red carpet of Hollywood.



## PENELOPE SET

The Penelope Set emits a sophisticated countenance yet also a flirtatious and fun aroma with its rendition of brilliant leaves of lime green set on platinum oval plates.



## AMBROSIA SET

The mystical blue of Swarovski crystals combined with a sweet and silvery touch draw its wearer into a realm of delicate charm.



## BRIDGETTE D'OR SET

The paragon of beauty inspired by symmetry comprises of polished green crystals entwined in geometric squares.



## BRIDGETTE SET

Choose between the Bridgette Set's allure of chic and stylishness or the luxurious and polished feel of the Bridgette D'Or.

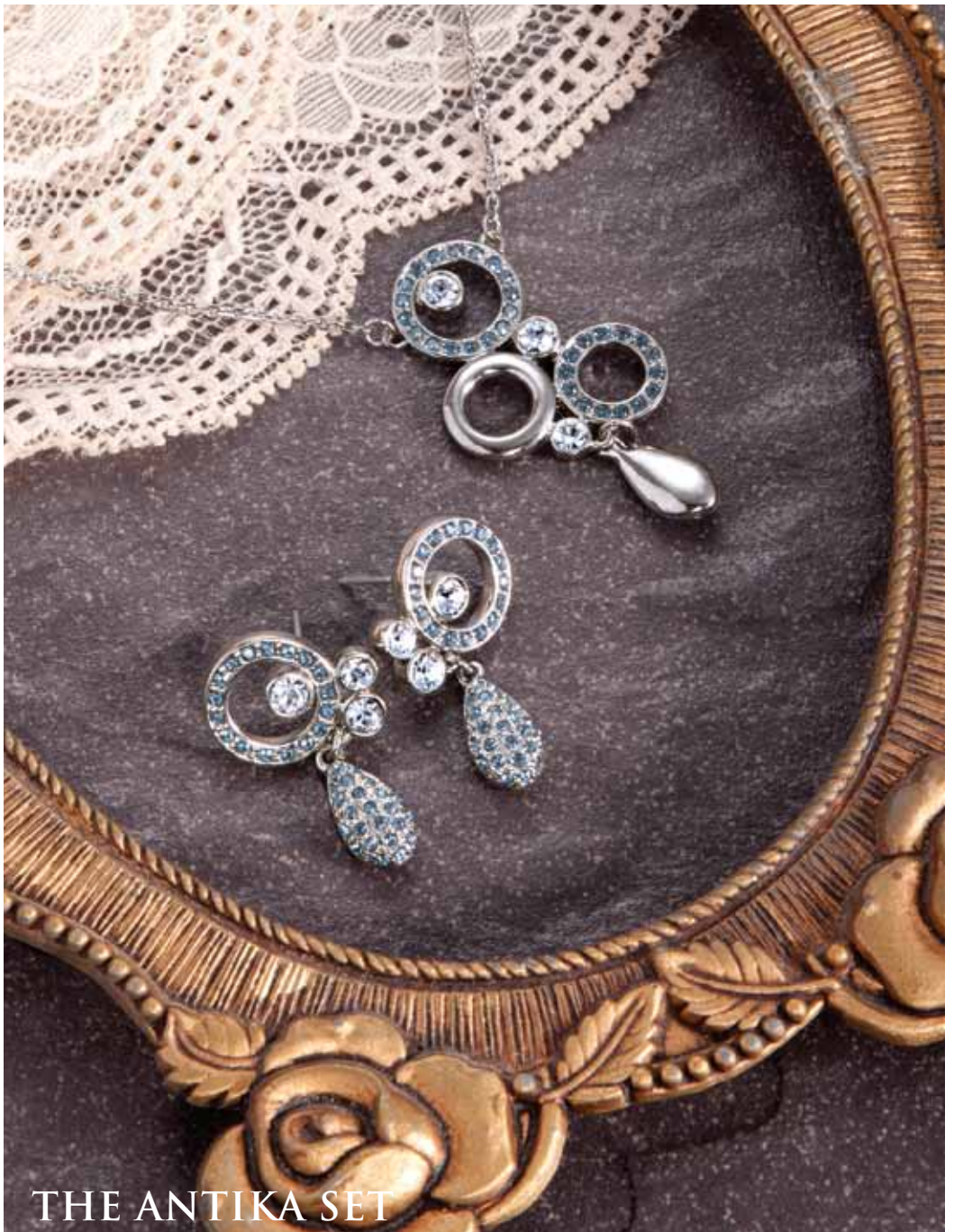
# AMARANTHINE COLLECTION

Exquisite jewellery, just like true beauty, is timeless and eternal. Adiva Divine's Amaranthine Collection captures and freezes time by meticulously rendering them into each separate jewellery set and pieces. Acquire lasting charm and flair by complementing any outfit with your favourite Amaranthine costume jewellery.



## THE ZENITH SET

Presenting a mythic feel of lost civilisations, the Zenith Set is a striking contrast between geometric shapes, triangles and circles.



## THE ANTIKA SET

Delicately ornate, the antique style of the Antika Set is a burst of circular beauty with a dangling teardrop to accentuate the design.





## THE ALLEGRA SET

Attractive, unique and glamorous, the Allegra Set elicits the feeling of elegance and grace while lending a strong sense of class to the wearer.





## THE CANDICE SET

Gorgeous, cute, feminine and delightful, the Candice Set is a pretty picture of perfection that will set off any outfit with an irresistible girlish attraction.



## HONEY GEM NECKLACE

Reminiscent of the golden hues of nectar, the Honey Gem Necklace is a desired piece of costume jewellery that will enliven any outfit with warm and alluring gold beauty.



## SABRINA CHAIN

Worn a dozen ways to suit a dozen occasions, the platinum-plated Sabrina Chain brings with it a romantic and womanly charm.

# HIGH FASHION IN HIGH SOCIETY

Costume jewellery has a long history of being desired by women of all ages, all social classes and all styles. The wearing of faux jewellery is an enduring trend that has long been part of the unique panache of fashionistas and style icons, often elevating them from being merely fashion-conscious, to being the envied trendsetters of their generation. From the roaring 20s to the shining stars of the silver screen throughout the 40s, costume jewellery has long been a part of celebrity life. Over the years, these twinkling trinkets have found their way into the jewellery box of women of most social classes everywhere.

Some of the most remembered names in costume jewellery include both high and low priced brands, such as Dior, Chanel, Coro (CoroCraft), Monet, Napier, and Sarah Coventry. Perhaps the most notable high-society advocate of the 'jewellery of the people' was Coco Chanel, who was responsible for designing some of the most memorable pieces of faux jewellery. Further supporting this trend of high-designed, inexpensive jewellery was Kenneth Jay Lane. Among the famous wearers of his costume jewellery creations were also among the celebrity clique: Jackie Onassis, Elizabeth Taylor, Diana Vreeland and Audrey Hepburn. But the fashion of 'fabulous fakes', as costume jewellery is often referred to, does not end with the fashion sirens of yesteryear. Today's biggest names on the red carpet are known for their penchant for costume jewellery, including Sarah Jessica Parker, Nicolette Sheridan, Madonna, and Demi Moore.

Today, high-end fashion jewellery has achieved a collectible, celebrated status with a large market for quality vintage and modern fashion jewellery. Adiva Divine is carefully and specifically designed to meet this deep-seated desire for costume jewellery.

# COSTUME JEWELLERY NEEDS SPECIFIC CARE, JUST AS YOUR OTHER FINE JEWELLERY

Fine jewellery and fashion jewellery should not mix whether you are wearing them, cleaning them, or storing them. Therefore, never keep your real gold and costume jewellery together. Always store separately.

To avoid your costume jewellery from quickly tarnishing or becoming rusty or pitted due to moisture, keep them in a plastic bag. Wrap loosely inside the bag and store in boxes, drawers, or plastic containers.

Always use big containers to keep jewels; do not jumble them with smaller ones.

While cleaning your costume jewellery, do not immerse it in water or any cleaning solution. Doing so will cause a change in the colour of the stones and dissolve the material used to set the stones. Instead, use a damp, soft cloth to wipe the jewellery.

Never apply perfume, deodorant, oil, body lotion or hairspray while wearing the jewellery, as the chemicals will tarnish the plating on the jewellery. Spray the perfume or hairspray first and then wear the jewellery.

Avoid wearing jewellery when bathing, going to bed, swimming, or when exercising.

Do not bend or apply excessive pressure to delicate jewellery. Bracelets or necklaces should be stored in a flat manner with stones turned upward to prevent them from coming loose and to maintain the shape of the jewellery piece.

**QNet Ltd**

47/F Bank of China Tower

1 Garden Road

Central, Hong Kong

Tel: +852 2263 9000

Fax: +852 2802 0981

Email: [global.support@qnet.net](mailto:global.support@qnet.net)

**24/7 Multilingual Global Support Centre (GSC)**

+603 7949 8288 (All languages)

**[www.qnet.net](http://www.qnet.net) or [www.avidivine.com](http://www.avidivine.com)**

Copyright © QNet Ltd / 2012. All rights reserved.

Copyrights and/or other intellectual property rights on all designs, graphics, logos, images, photos, texts, trade names, trademarks, etc., in this publication are reserved. The reproduction, transmission, or modification of any part of the contents of this publication is strictly prohibited.

English Edition

**QNET INDEPENDENT REPRESENTATIVE**

Name

IR Number

Phone

Email

Exclusively available from **QNET**